

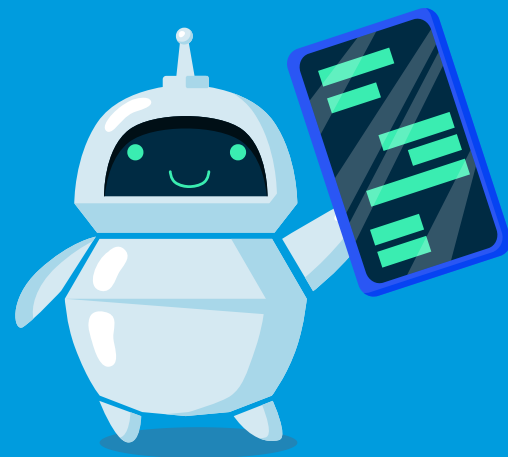
blueprint[®]

RPA Glossary

.atmx

Extension of file used to store a single AAv11 Taskbot. These files are encrypted so only can be opened by AA tool or Blueprint.

Automation Anywhere v.11



Extension of file used by UiPath for each 'module' that comprises a UiPath 'Process'.

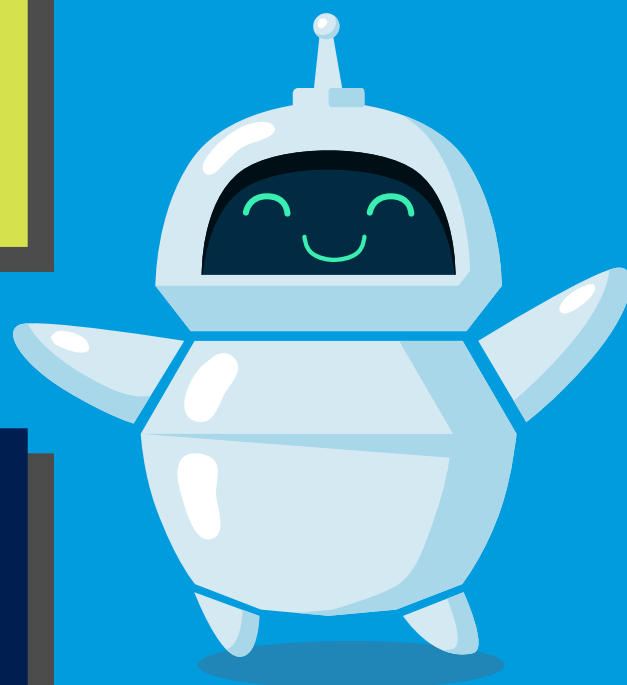
.xaml

UiPath

.mbot

Extension of file used to store a single AAv11 Metabot. These files are encrypted so only can be opened by AA tool or Blueprint.

Automation Anywhere v.11



.bprelease

Extension of file exported by Blue Prism that could contain one or more processes and/or objects.

Blue Prism



Extension of file exported by AAv11 Control Center that could contain multiple taskbots and/or metabots.

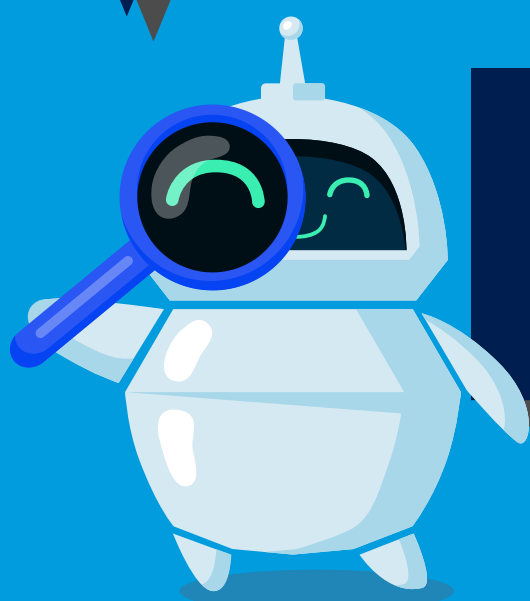
.aapkg

Automation Anywhere v.11

.nupkg

Extension of file exported by UiPath from orchestrator. Contains all xamls and files associated with a UiPath Project.

UiPath



Solution

Term for files exported in Power Automate Portal that contain one or more flows.

Microsoft Power Automate

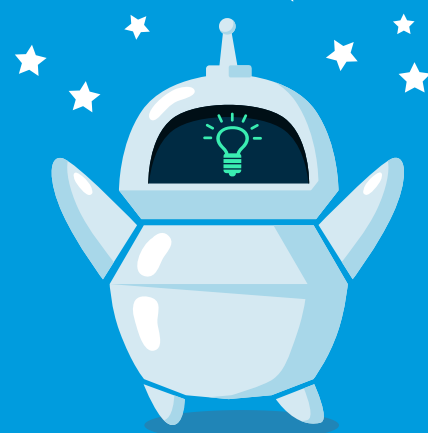
Bot Manager

Bot Manager refers to a software or platform that is used to manage and control a fleet of bots in an RPA environment. It provides a centralized interface for administrators and RPA developers to monitor, govern, and orchestrate the activities of multiple bots.

Bot Runner

The software component that actually 'runs' a bot on a machine.

All Automation Anywhere



Control Room

AA software that controls and manages running bots for a community of users across a set of machines.

All Automation Anywhere

Orchestrator

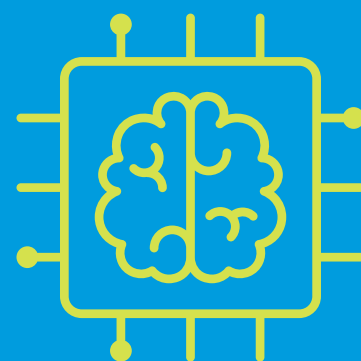
UiPath software that controls and manages running bots for a community of users across a set of machines.

UiPath

Microsoft Power Automate Portal

Power Automate software that controls and manages running bots for a community of users across a set of machines.

Power Automate



Control

BP software that controls and manages running bots for a community of users across a set of machines.

Blue Prism

Reusable Components

Object - Reusable Blue Prism component

Metabot - Reusable AAv11 component



Actions

Actions - PAD, AAv11, AA360

Stages - Blue Prism

Activities - UiPath

Individual Bot

Flow - PAD

Taskbot - AAv11 and AA360

Process - Blue Prism and UiPath

PAD = Microsoft Power Automate

AAv11 = Automation Anywhere version 11

AA360 = Automation Anywhere 360

